

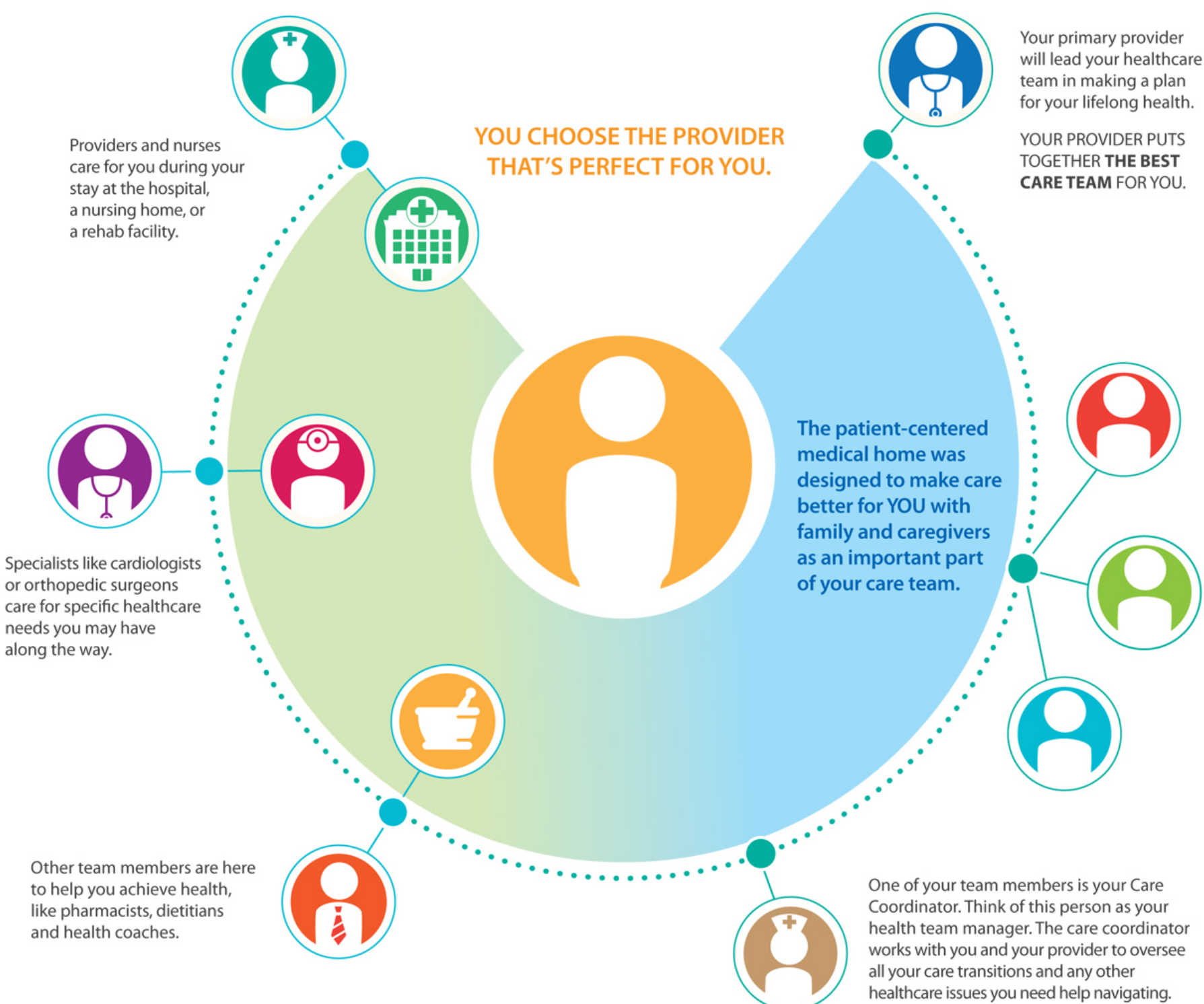
DR.HARISH FOUNDATION

THE PATIENT-CENTERED MEDICAL HOME

WHAT IS IT?

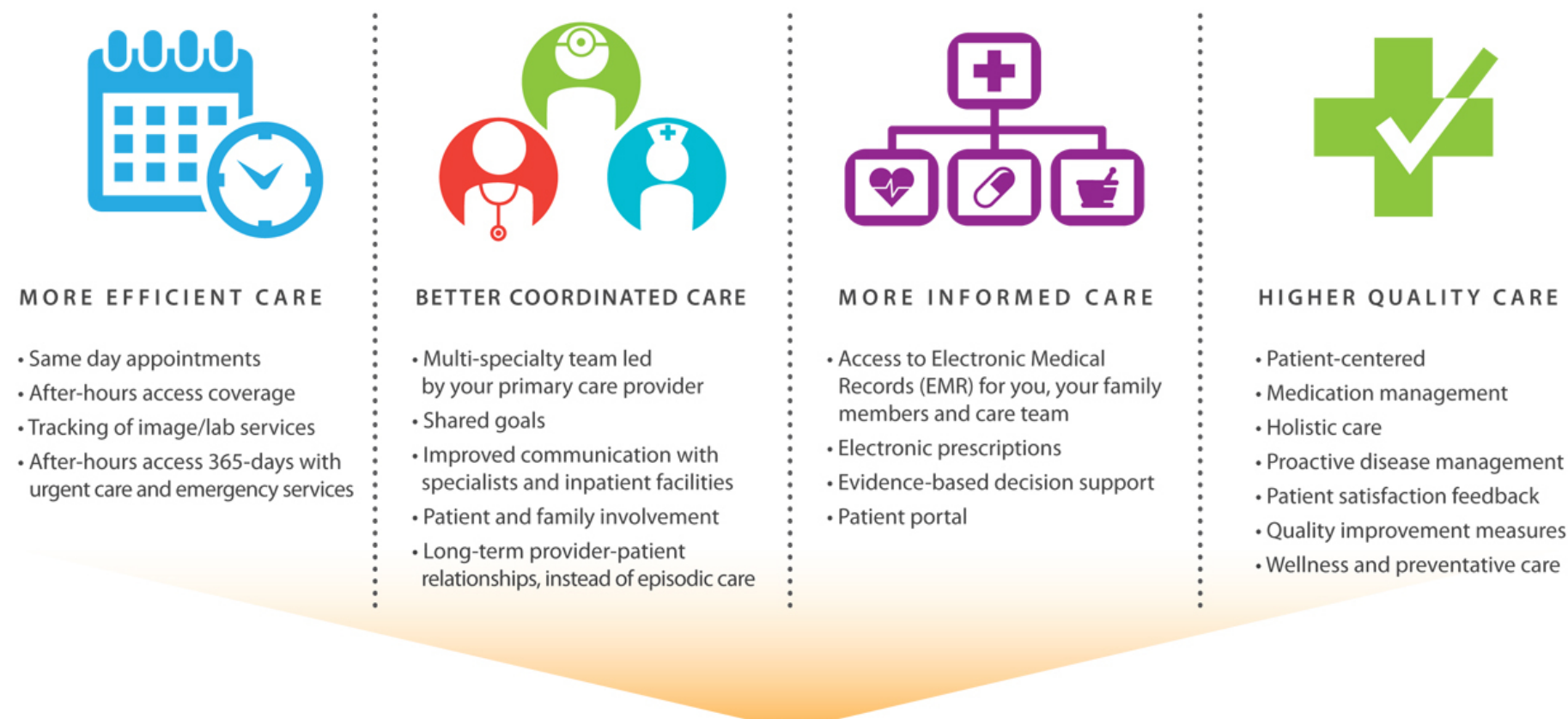
NO, IT'S NOT ACTUALLY A 'HOME'. SIMPLY PUT, A PATIENT-CENTERED MEDICAL HOME IS A METHOD OF DELIVERING CARE WHERE HEALTH PROFESSIONALS ALL WORK TOGETHER TO PROVIDE A NEW, EXPANDED TYPE OF CARE TO PATIENTS. IT INVOLVES A COORDINATED TEAM OF PROVIDERS, LED BY YOUR DOCTOR OR NURSE PRACTITIONER, WHO WORK TOGETHER TO ACHIEVE YOUR HEALTH GOALS AND TO PROVIDE THE BEST POSSIBLE CARE FOR YOU YOUR WHOLE LIFE THROUGH.

IT STARTS WITH YOU — THE PATIENT.



ALL THESE PEOPLE WORK TOGETHER, LED BY YOUR PRIMARY CARE PROVIDER AND GUIDED BY YOUR CARE COORDINATOR, TO MAKE SURE YOU GET THE CARE YOU NEED, WHEN YOU NEED IT. AND TO MAKE SURE YOU'RE INVOLVED EVERY STEP OF THE WAY.

WHAT DOES THIS MEAN FOR YOU?



OUR STATUS AS A PATIENT-CENTERED MEDICAL HOME MEANS DR.HARISH FOUNDATION IS SET UP TO OFFER PATIENTS THE BENEFITS OF ACCOUNTABLE CARE, LED BY YOUR PRIMARY CARE PROVIDER.

ACCOUNTABLE CARE ORGANIZATION

AS AN ACCOUNTABLE CARE ORGANIZATION, DR. HARISH FOUNDATION HAS MADE A COMMITMENT TO IMPROVE BOTH THE QUALITY AND COST OF CARE FOR PATIENTS, ACHIEVED THANKS TO BETTER CARE CO-ORDINATION.



To learn more about our Patient - Centered Medical Home, visit : www.drharishfoundation.com

Dr. Harish Foundation @ The GOLDEN FAMILY (TGF)
 Primary Care, Wellness, Assisted Living Homes PLUS (+)
 ... YOUR MEDICAL OMBUDSMAN

